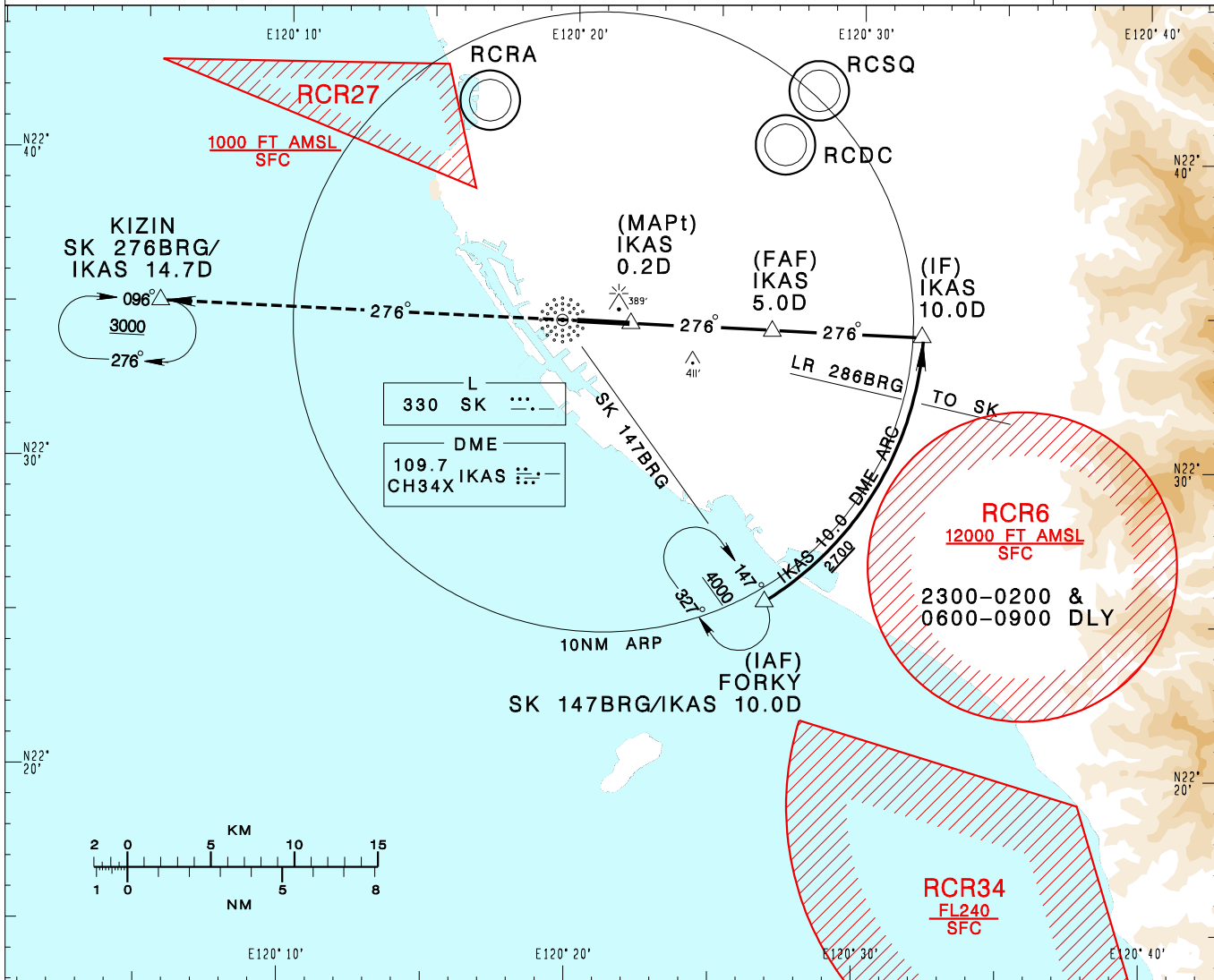


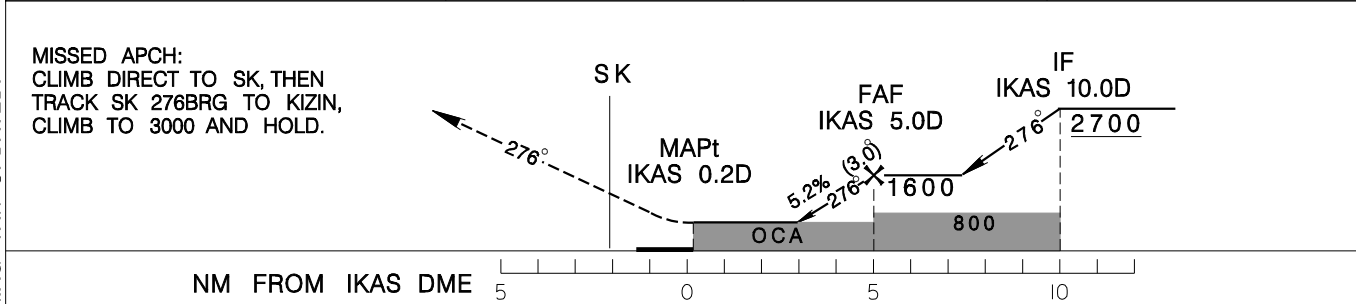
**高雄國際機場**  
KAOHSIUNG INTL AD

RCKH  
NDB RWY27

KAOHSIUNG APP 124.7 125.7	KAOHSIUNG TWR 118.7 120.7	ATIS 127.8	VAR 4°W-2023 ↑ 12100' MSA ARP 25NM	
Apt Elev: 32'	Rwy27 DTHR Elev: 31'	Trans Level: FL130		Trans Alt: 11,000'
BEARINGS ARE MAGNETIC; DISTANCES ARE NAUTICAL MILES; ELEVATIONS, HEIGHTS IN FEET				



DIST to IKAS	3DME	4DME	5DME
ADVISORY ALT	980	1300	1600



MINIMA (OCA IN FT, VIS IN M, OCH IN FT)					NOTE 1. CIRCLING NOT AUTHORIZED. 2. THE INITIAL APCH ARC INFRINGES RCR-6 AREA, PRIOR COORDINATION WITH ROCAF WILL BE COMPLETED BY ATC BEFORE ISSUING CLEARANCE DURING RCR-6 ACTIVE HOURS.  *DME REQUIRED
CATEGORY	A	B	C	D	
STRAIGHT IN	640/1200 RVR1200 608		640/2100 608		
STRAIGHT IN (ALS OUT)	640/1600 608		640/2800 608		

CHANGES: MSA AND MAG VAR UPDATED.